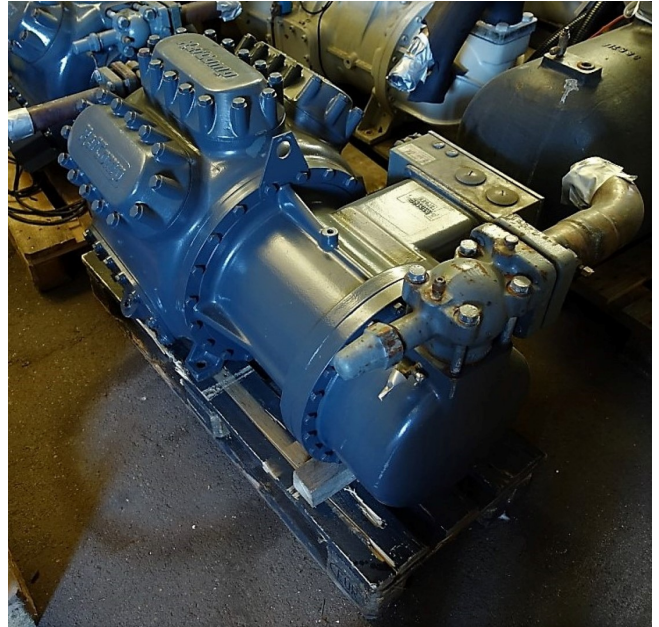


Refcomp SRC M 300 LB

Specifications

Brand	Refcomp
Type	SRC M 300 LB
Refrigerant	Freon
Refrigerant type	R407 C or other types
kW at +10°C/+40°C	350.0
kW at 0°C/+40°C	240.0
kW at -5°C/+40°C	194.2
kW at -10°C/+40°C	154.6
kW at -20°C/+40°C	93.8
Electromotor Specs	90
Sight Glass	✓
Weight in kg.	760
Sizes	1200x750x660mm (LxWxH)



Description

Used Refcomp SRC M 300 LB

RefComp SRC M 300 LB // This RefComp uses refrigerant R 407 C / Hp 120 / kW 90 / 348.3 Vol m³/h / N° of cylinders 7

